

## Monthly Weather Summary in Thailand

---

Thailand's weather in June 2021 dominated by the southwest monsoon prevailed over the Andaman Sea, Thailand and the Gulf of Thailand that was occasionally strengthened coupled with the low pressure cell covering Laos and Vietnam almost the month. Moreover during the middle of the month, the monsoon trough laid across the top of northern Thailand and upper Laos toward the tropical storm "KOGUMA (2104)" over Thanh Ho, Vietnam in the morning of June 13 and respectively downgraded to the active low pressure cell covering the top of northern Thailand and upper Vietnam on June 14 after that dissipating on the same day. These condition caused periodically abundant rainfall over Thailand. However, the amount and distribution of rain in Thailand was uneven causing below normal rainfall in all parts. Monthly rainfall was below normal in all part i.e. northern part 30.9 mm (20%), northeastern part 22.8 mm (11%), central part 54.0 mm (37%), eastern part 50.2 mm (19%), southern part (east coast) 41.0 mm (36%) and southern part (west coast) 1.8 mm (1%). The average total rainfall over Thailand in June was 18 percent lower than 1981-2010 normal.

**1 – 10 June :** The weak southwest monsoon which prevailed over the Andaman Sea, Thailand and the Gulf of the Thailand strengthened during the second half of the period. In addition, the low pressure cell covered upper Vietnam, upper Laos and the Gulf of Tonkin since mid-period coupled with the monsoon trough laying across the upper northern part and the top of northern Thailand toward the low pressure cell over the mentioned areas during late period. These caused isolated light rain over upper Thailand during the first half of the period and then increasing in rainfall that received scattered to fairly widespread rain with heavy to very heavy rainfall in some areas. The highest daily rainfall was 156.5 mm at Amphoe Si Songkhram in Nakhon Phanom province on June 7. Thundershower with gusty wind occurred at Ratchaburi province on June 2, at Chiang Mai province on June 3, at Phayao, Phrae and Lampang provinces on June 4, at Udon Thani, Roi Et, Kalasin and Nakhon Ratchasima provinces on June 4 and 5, at Nong Bua Lam Phu, Surin, Si Saket and Ubon Ratchathani provinces on June 5 and at Phichit province on June 6 and flood was reported at Mae Hong Son province on June 4 and Tak province on June 6 and Gusty wind at Saraburi province on June 6. For southern part, abundant rainfall almost the period especially during the middle and late periods that received scattered to fairly widespread rain with heavy to very heavy rainfall in some areas. The maximum daily rainfall of 150.4 mm at Amphoe Kapoe in Ronong province on June 9. Floods occurred at Surat Thani province on June 5 and gusty wind at Pattani province on June 5 and 9 and at Ranong province on June 8.

**11 – 20 June :** During early period, the monsoon trough laid across the top of northern Thailand and upper Laos toward the active low pressure cell in the upper South China Sea. This storm developed to tropical depression in the afternoon of June 11 and intensified into the tropical storm namely "KOGUMA (2104)" on the next day before made landfall over Thanh Ho, Vietnam in the morning of June 13. It weakened to tropical depression and degenerated into an area of the active low pressure cell covering the top of northern Thailand and upper Vietnam on June 14 then dissipating on the same

day. In addition, the active southwest monsoon prevailed over Andaman Sea, Thailand and the Gulf of Thailand during the first half of the period. These caused abundant rainfall in northern and northeastern parts during early and middle periods while scattered to fairly widespread rain was observed in central and eastern parts almost the whole period. The heavy to very heavy rainfall in some areas and the highest daily rainfall in upper Thailand was 162.0 mm at Amphoe Bo Kluae in Nan province on June 13. Gusty wind was reported at Uthai Thani province on June 15 and flood at Tak province on June 16. In southern part, abundant rainfall during early and late periods mainly along west coast that received fairly widespread rain with heavy rainfall in some areas. The maximum daily rainfall of 82.8 mm at Amphoe Sungai Kolok in Narathiwat on June 19 and gusty wind occurred at Phatthalung province on June 16 and 17 and at Pattani province on June 17.

**21 – 30 June :** Due to the weak southwest monsoon prevailing over the Andaman Sea, Thailand and the Gulf of Thailand throughout the period and the low pressure cell covering Laos and upper Vietnam during middle and late periods. These conditions caused isolated to scattered rain over upper Thailand except for increasing in rainfall with fairly widespread rain with heavy rainfall in some areas on June 27 and 28. The highest daily rainfall in upper Thailand was 112.4 mm at Amphoe Nong Soong in Mukdahan on June 23. Gusty wind occurred at Nong Bua Lam Phu, Surin and Roi Et provinces on June 23, at Nakhon Ratchasima province on June 26 and 27 and at Nong Bua Lam Phu province on June 27. In southern part, isolated to scattered rain along east coast while fairly widespread rain with heavy to very heavy rainfall in some areas along west coast. The maximum daily rainfall of 145.0 mm at Amphoe Takua Pa in Phang-nga province on June 24. Gusty wind was reported at Nakhon Si Thummarat province on June 23

-----

Note : Rainfall, temperatures and natural disasters in this report were updated up to July 6, 2021

Climatological Center  
Meteorological Development Division  
Meteorological Department

Monthly Current Report  
Rainfall and Accumulative Rainfall  
June 2021

Northern Thailand

Station	Temperature ( °c)		Rainfall (mm)		Accumulative rainfall (mm) Since 1 January	
	Mean	Above or below normal	Actual	Above or below normal	Actual	Above or below normal
Chiang Rai	28.0	0.8	219.8	41.4	509.4	-29.8
Mae Hong Son	27.9	0.3	110.3	-80.2	430.9	-26.5
Phayao	28.4	0.8	122.8	20.0	482.4	65.6
Chiang Mai	28.7	1.1	131.5	7.0	413.2	38.5
Tha Wang Pha	29.1	1.9	226.6	-129.4	698.9	-273.4
Nan	29.1	0.8	129.7	-4.1	472.1	12.4
Lamphun	29.1	0.9	101.2	-23.0	277.4	-66.9
Lampang	29.5	1.2	66.7	-50.8	295.4	-82.8
Mae Sariang	26.9	0.1	173.4	-9.6	493.1	80.9
Phrae	29.0	0.8	175.9	37.1	529.3	88.1
Uttaradit	29.8	0.9	99.2	-107.2	344.9	-205.9
Bhumibol Dam	29.6	1.1	49.9	-56.6	434.7	33.9
Tak	29.6	1.2	31.0	-96.8	545.6	162.4
Mae Sot	26.9	0.6	306.9	51.5	490.4	-9.4
Umphang	25.5	0.5	137.1	-50.4	540.0	-7.6
Phitsanulok	29.7	0.7	128.2	-37.5	485.8	49.4
Lom Sak	29.1	0.9	93.1	-43.1	432.5	16.6
Phetchabun	29.5	1.3	102.2	-59.5	433.1	-37.0
Wichian Buri	30.0	0.9	31.7	-112.6	408.4	-54.8
Kamphaeng Phet	29.5	1.1	68.6	-96.5	375.2	-90.3
Over the area	28.7	0.8	125.3	-30.9 -20%	454.6	6.2 1%

Northeastern Thailand

Station	Temperature ( °c)		Rainfall (mm)		Accumulative rainfall (mm) Since 1 January	
	Mean	Above or below normal	Actual	Above or below normal	Actual	Above or below normal
Nong Khai	29.1	0.9	367.2	104.9	689.1	53.1
Loei	28.6	0.8	72.6	-87.0	495.3	-27.9
Udon Thani	29.0	0.4	191.2	-37.8	590.6	11.0
Nakhon Phanom	28.6	0.8	464.2	54.7	881.6	19.8
Sakon Nakhon	29.1	1.0	276.5	9.7	627.4	-51.8
Mukdahan	29.2	0.9	211.6	-21.8	715.7	146.5
Khon Kaen	29.1	0.5	142.3	-19.3	467.7	-19.7
Kosum Phisai	30.1	1.1	168.6	-9.2	483.2	-15.4
Roi Et	29.6	0.9	159.8	-63.7	428.5	-121.0
Chaiyaphum	30.0	1.5	31.0	-106.6	308.9	-131.6
Ubon Ratchathani	29.4	1.0	261.0	20.8	491.3	-92.2
Tha Tum	29.0	-0.1	165.7	-40.4	482.7	-47.8
Surin	29.1	0.8	202.4	-2.3	636.7	96.2
Nakhon Ratchasima	30.4	1.3	37.2	-67.3	388.1	-4.1
Chok Chai	29.9	1.2	68.3	-39.0	313.8	-80.1
Nang Rong	29.3	0.7	69.4	-60.3	575.0	124.9
Over the area	29.3	0.8	180.6	-22.8 -11%	536.0	-8.8 -2%

- NOTES :
- 1) Mean temperature is the average of daily dry-bulb temperature
  - 2) "T" is trace, rainfall amount less than 0.1 mm.
  - 3) "blank" is incomplete data.
  - 4) Temperature and rainfall are preliminary data.

Monthly Current Report  
Rainfall and Accumulative Rainfall  
June 2021

Central Thailand

Station	Temperature ( °c)		Rainfall (mm)		Accumulative rainfall (mm) Since 1 January	
	Mean	Above or below normal	Actual	Above or below normal	Actual	Above or below normal
Nakhon Sawan	30.6	1.2	108.8	-28.5	360.7	-40.3
Bua Chum	30.4	1.5	37.1	-79.2	303.3	-92.2
Lop Buri	30.4	1.4	88.0	-36.0	287.9	-109.4
Suphan Buri	30.2	1.0	94.6	0.2	451.1	163.8
Thong Pha Phum	27.5	0.4	234.3	-44.0	548.5	-127.3
Kanchanaburi	30.1	1.1	27.5	-58.9	371.3	10.6
Bangkok Airport	30.5	1.1	45.0	-123.1	371.4	-153.6
Bangkok Metropolis	30.4	0.9	94.5	-62.6	559.7	-11.9
Over the area	30.0	1.1	91.2	-54.0 -37%	406.7	-45.1 -10%

Eastern Thailand

Station	Temperature ( °c)		Rainfall (mm)		Accumulative rainfall (mm) Since 1 January	
	Mean	Above or below normal	Actual	Above or below normal	Actual	Above or below normal
Prachin Buri	30.2	1.3	131.1	-92.4	446.9	-199.0
Kabin Buri	29.0	0.6	136.3	-61.6	548.0	-26.4
Aranyaprathet	29.5	0.9	212.7	49.1	616.2	113.2
Chon Buri	30.7	1.1	93.9	-53.8	504.1	35.3
Ko Sichang	29.5	0.2	72.4	-53.0	271.7	-141.6
Pattaya	29.8	0.9	57.0	-62.0	417.4	2.9
Sattahip	30.0	0.6	84.5	-45.6	889.9	405.2
Rayong	30.0	0.6	109.3	-55.8	523.3	-49.5
Chanthaburi	29.0	1.1	377.9	-134.7	1082.8	-74.5
Khlong Yai	27.7	0.3	837.6	7.7	1597.6	-82.9
Over the area	29.5	0.7	211.3	-50.2 -19%	689.8	-1.8 0%

- NOTES :
- 1) Mean temperature is the average of daily dry-bulb temperature
  - 2) "T" is trace, rainfall amount less than 0.1 mm.
  - 3) "blank" is incomplete data.
  - 4) Temperature and rainfall are preliminary data.

Monthly Current Report  
Rainfall and Accumulative Rainfall  
June 2021

Southern Thailand, east coast

Station	Temperature ( °c)		Rainfall (mm)		Accumulative rainfall (mm) Since 1 January	
	Mean	Above or below normal	Actual	Above or below normal	Actual	Above or below normal
Phetchaburi	29.7	0.7	61.1	-30.9	174.7	-102.1
Hua Hin	29.6	0.6	75.8	-3.1	271.9	-43.3
Prachuap Khiri Khan	29.3	0.9	43.8	-42.4	298.5	-88.1
Chumphon	28.3	0.7	86.9	-80.3	368.9	-276.2
Surat Thani	28.2	0.6	67.3	-57.7	367.4	-82.1
Ko Samui	29.9	1.2	29.8	-94.3	299.4	-285.1
Nakhon Si Thammarat	28.6	0.4	28.8	-88.5	613.0	-88.4
Songkhla	28.7	0.1	119.6	19.7	529.4	51.7
Hat Yai Airport	27.7	0.0	91.0	-28.3	591.6	52.7
Pattani Airport	28.2	0.3	69.2	-40.2	526.6	72.8
Narathiwat	28.4	0.5	119.1	-4.1	524.2	-86.6
Over the area	28.8	0.6	72.0	-41.0 -36%	415.1	-79.6 -16%

Southern Thailand, west coast

Station	Temperature ( °c)		Rainfall (mm)		Accumulative rainfall (mm) Since 1 January	
	Mean	Above or below normal	Actual	Above or below normal	Actual	Above or below normal
Ranong	27.7	0.4	580.9	-68.5	1329.7	-60.1
Takua Pa	27.8	0.0	458.5	34.3	1503.1	236.3
Phuket	29.2	0.6	164.1	-49.2	659.1	-84.3
Phuket Airport	28.7	0.4	289.8	33.0	1032.8	176.8
Ko Lanta	28.3	-0.2	290.3	31.8	816.3	98.6
Trang Airport	27.9	0.5	117.4	-83.7	629.9	-65.1
Satun	28.0	0.2	273.3	89.8	984.9	173.1
Over the area	28.2	0.2	310.6	-1.8 -1%	993.7	67.9 7%

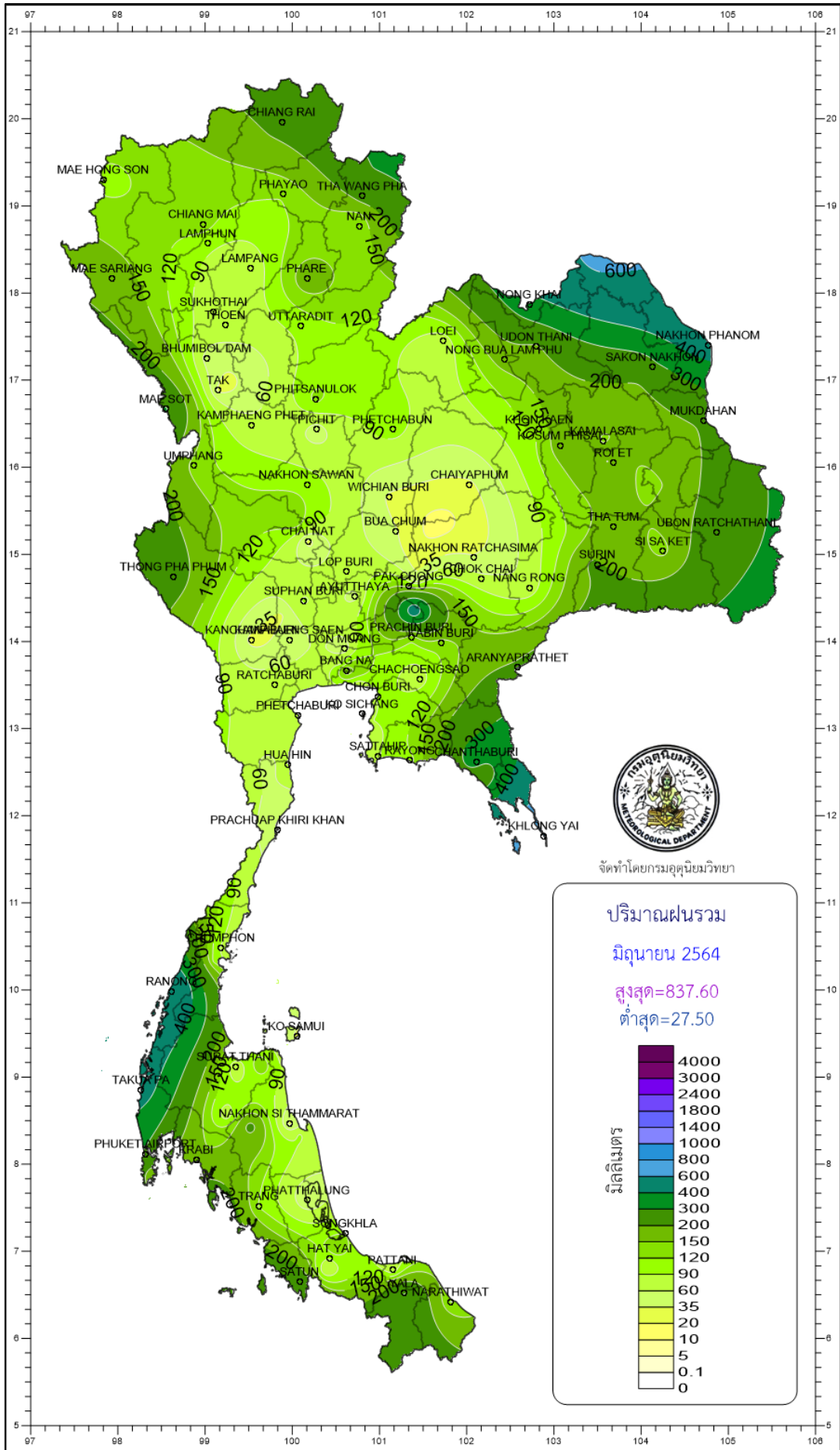
- NOTES :
- 1) Mean temperature is the average of daily dry-bulb temperature
  - 2) "T" is trace, rainfall amount less than 0.1 mm.
  - 3) "blank" is incomplete data.
  - 4) Temperature and rainfall are preliminary data.

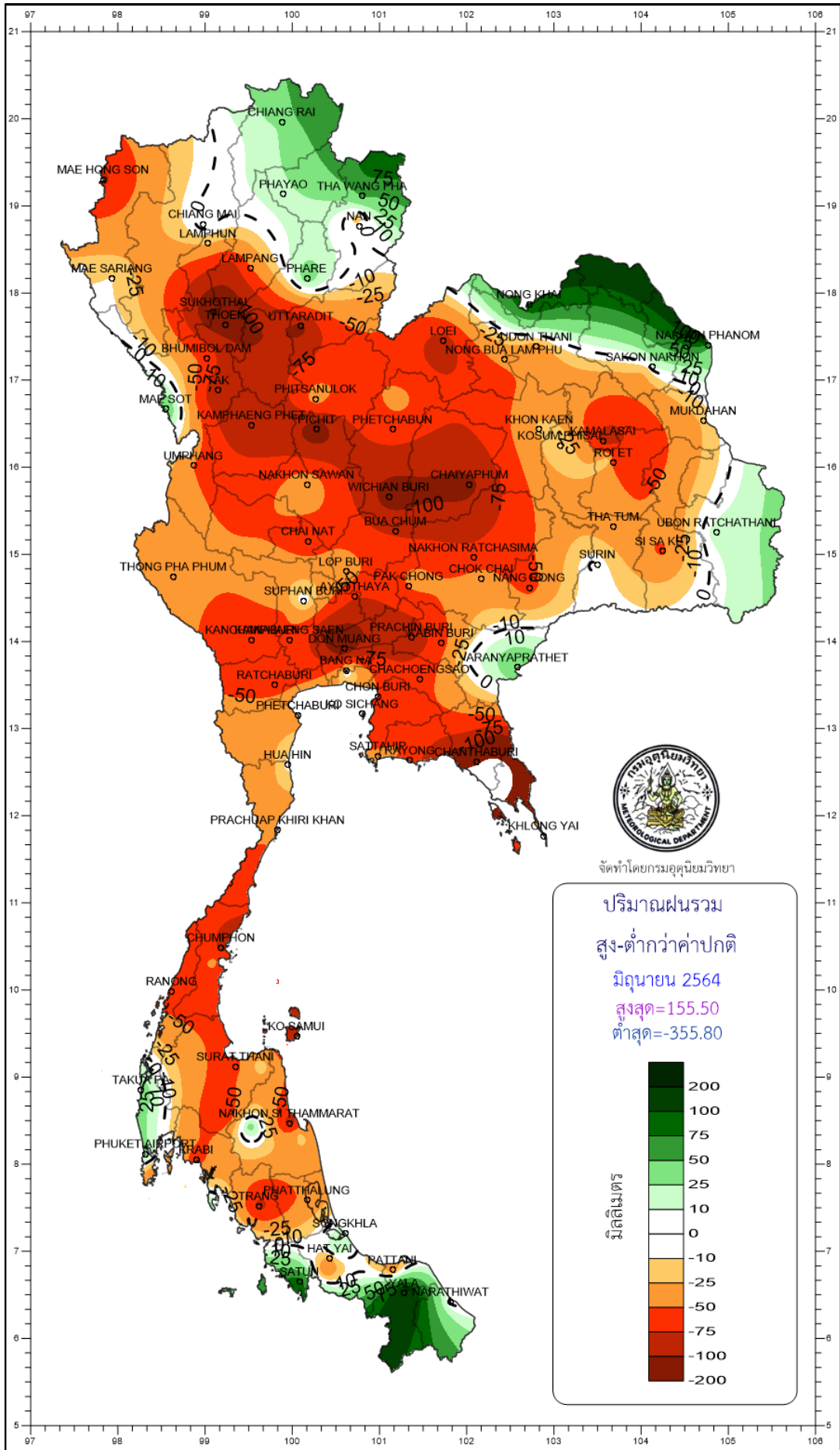
## Monthly Current Report

June 2021

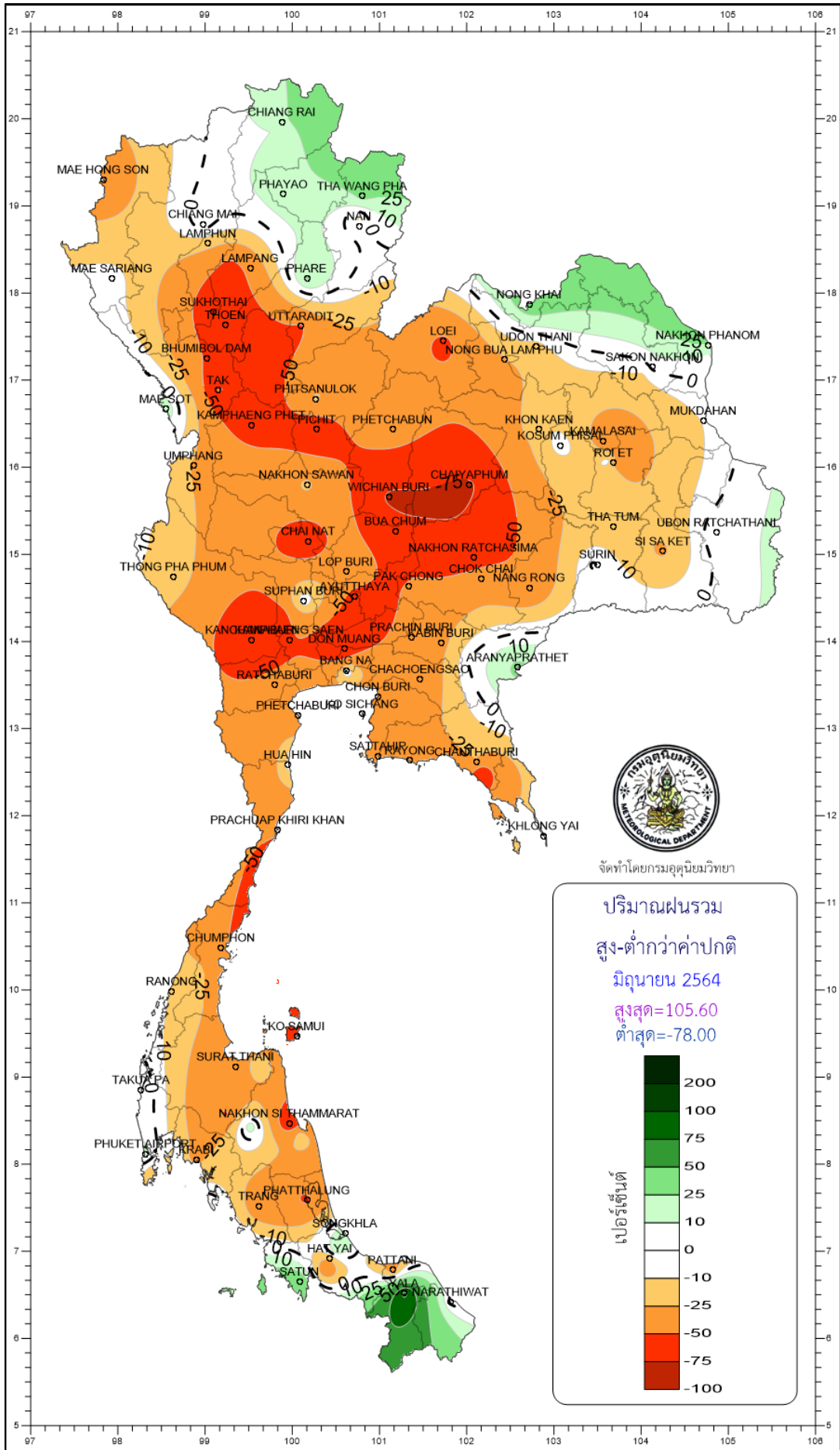
Region	Station	Temperature (°c)		Rainfall (mm)		Accumulative rainfall (mm) Since 1 January	
		Mean	Above or below normal	Actual	Above or below normal	Actual	Above or below normal
North	Chiang Rai	28.0	0.8	219.8	41.4	509.4	-29.8
	Mae Hong Son	27.9	0.3	110.3	-80.2	430.9	-26.5
	Phayao	28.4	0.8	122.8	20.0	482.4	65.6
	Chiang Mai	28.7	1.1	131.5	7.0	413.2	38.5
	Tha Wang Pha	28.4	0.5	226.6	53.2	698.9	190.5
	Nan	29.1	0.8	129.7	-4.1	472.1	12.4
	Lamphun	29.1	0.9	101.2	-23.0	277.4	-66.9
	Lampang	29.5	1.2	66.7	-50.8	295.4	-82.8
	Mae Sariang	26.9	0.1	173.4	-9.6	493.1	80.9
	Phrae	29.0	0.8	175.9	37.1	529.3	88.1
	Uttaradit	29.8	0.9	99.2	-107.2	344.9	-205.9
	Bhumibol Dam	29.6	1.1	49.9	-56.6	434.7	33.9
	Tak	29.6	1.2	31.0	-96.8	545.6	162.4
	Mae Sot	26.9	0.6	306.9	51.5	490.4	-9.4
	Umphang	25.5	0.5	137.1	-50.4	540.0	-7.6
	Phitsanulok	29.7	0.7	128.2	-37.5	485.8	49.4
	Lom Sak	29.1	0.9	93.1	-43.1	432.5	16.6
	Phetchabun	29.5	1.3	102.2	-59.5	433.1	-37.0
	Wichian Buri	30.0	0.9	31.7	-112.6	408.4	-54.8
	Kamphaeng Phet	29.5	1.1	68.6	-96.5	375.2	-90.3
Northeast	Nong Khai	29.1	0.9	367.2	104.9	689.1	53.1
	Loei	28.6	0.8	72.6	-87.0	495.3	-27.9
	Udon Thani	29.0	0.4	191.2	-37.8	590.6	11.0
	Nakhon Phanom	28.6	0.8	464.2	54.7	881.6	19.8
	Sakon Nakhon	29.1	1.0	276.5	9.7	627.4	-51.8
	Mukdahan	29.2	0.9	211.6	-21.8	715.7	146.5
	Khon Kaen	29.1	0.5	142.3	-19.3	467.7	-19.7
	Kosum Phisai	30.1	1.1	168.6	-9.2	483.2	-15.4
	Roi Et	29.6	0.9	159.8	-63.7	428.5	-121.0
	Chaiyaphum	30.0	1.5	31.0	-106.6	308.9	-131.6
	Ubon Ratchathani	29.4	1.0	261.0	20.8	491.3	-92.2
	Tha Tum	29.0	-0.1	165.7	-40.4	482.7	-47.8
	Surin	29.1	0.8	202.4	-2.3	636.7	96.2
	Nakhon Ratchasima	30.4	1.3	37.2	-67.3	388.1	-4.1
Chok Chai	29.9	1.2	68.3	-39.0	313.8	-80.1	
Nang Rong	29.3	0.7	69.4	-60.3	575.0	124.9	
Central	Nakhon Sawan	30.6	1.2	108.8	-28.5	360.7	-40.3
	Bua Chum	30.4	1.5	37.1	-79.2	303.3	-92.2
	Lop Buri	30.4	1.4	88.0	-36.0	287.9	-109.4
	Suphan Buri	30.2	1.0	94.6	0.2	451.1	163.8
	Thong Pha Phum	27.5	0.4	234.3	-44.0	548.5	-127.3
	Kanchanaburi	30.1	1.1	27.5	-58.9	371.3	10.6
	Bangkok Airport	30.5	1.1	45.0	-123.1	371.4	-153.6
	Bangkok Metropolis	30.4	0.9	94.5	-62.6	559.7	-11.9
East	Prachin Buri	30.2	1.3	131.1	-92.4	446.9	-199.0
	Kabin Buri	29.0	0.6	136.3	-61.6	548.0	-26.4
	Aranyaprathet	29.5	0.9	212.7	49.1	616.2	113.2
	Chon Buri	30.7	1.1	93.9	-53.8	504.1	35.3
	Ko Sichang	29.5	0.2	72.4	-53.0	271.7	-141.6
	Pattaya	29.8	0.9	57.0	-62.0	417.4	2.9
	Sattahip	30.0	0.6	84.5	-45.6	889.9	405.2
	Rayong	30.0	0.6	109.3	-55.8	523.3	-49.5
	Chanthaburi	29.0	1.1	377.9	-134.7	1082.8	-74.5
Khlung Yai	27.7	0.3	837.6	7.7	1597.6	-82.9	
South (East Coast)	Phetchaburi	29.7	0.7	61.1	-30.9	174.7	-102.1
	Hua Hin	29.6	0.6	75.8	-3.1	271.9	-43.3
	Prachuap Khiri Khan	29.3	0.9	43.8	-42.4	298.5	-88.1
	Chumphon	28.3	0.7	86.9	-80.3	368.9	-276.2
	Surat Thani	28.2	0.6	67.3	-57.7	367.4	-82.1
	Ko Samui	29.9	1.2	29.8	-94.3	299.4	-285.1
	Nakhon Si Thammarat	28.6	0.4	28.8	-88.5	613.0	-88.4
	Songkhla	28.7	0.1	119.6	19.7	529.4	51.7
	Hat Yai Airport	27.7	0.0	91.0	-28.3	591.6	52.7
	Pattani Airport	28.2	0.3	69.2	-40.2	526.6	72.8
Narathiwat	28.4	0.5	119.1	-4.1	524.2	-86.6	
South (West Coast)	Ranong	27.7	0.4	580.9	-68.5	1329.7	-60.1
	Takua Pa	27.8	0.0	458.5	34.3	1503.1	236.3
	Phuket	29.2	0.6	164.1	-49.2	659.1	-84.3
	Phuket Airport	28.7	0.4	289.8	33.0	1032.8	176.8
	Ko Lanta	28.3	-0.2	290.3	31.8	816.3	98.6
	Trang Airport	27.9	0.5	117.4	-83.7	629.9	-65.1
	Satun	28.0	0.2	273.3	89.8	984.9	173.1
	Over the area	29.1	0.8	155.6	-33.1	546.4	-11.1
					-18%		-2%

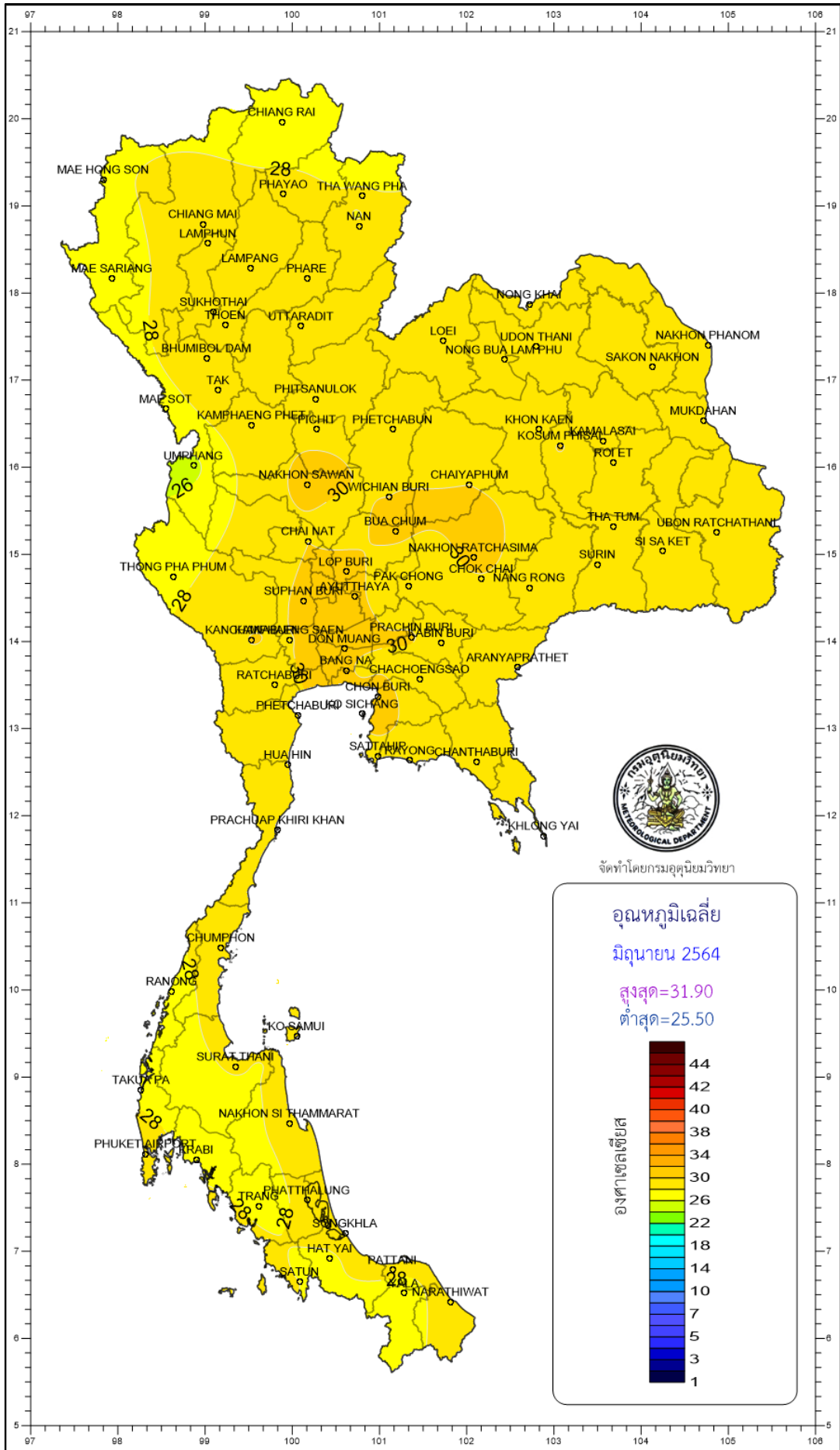
- NOTES :
- 1) Mean temperature is the average of daily dry-bulb temperature
  - 2) "T" is trace, rainfall amount less than 0.1 mm.
  - 3) "blank" is incomplete data.
  - 4) Temperature and rainfall are preliminary data.



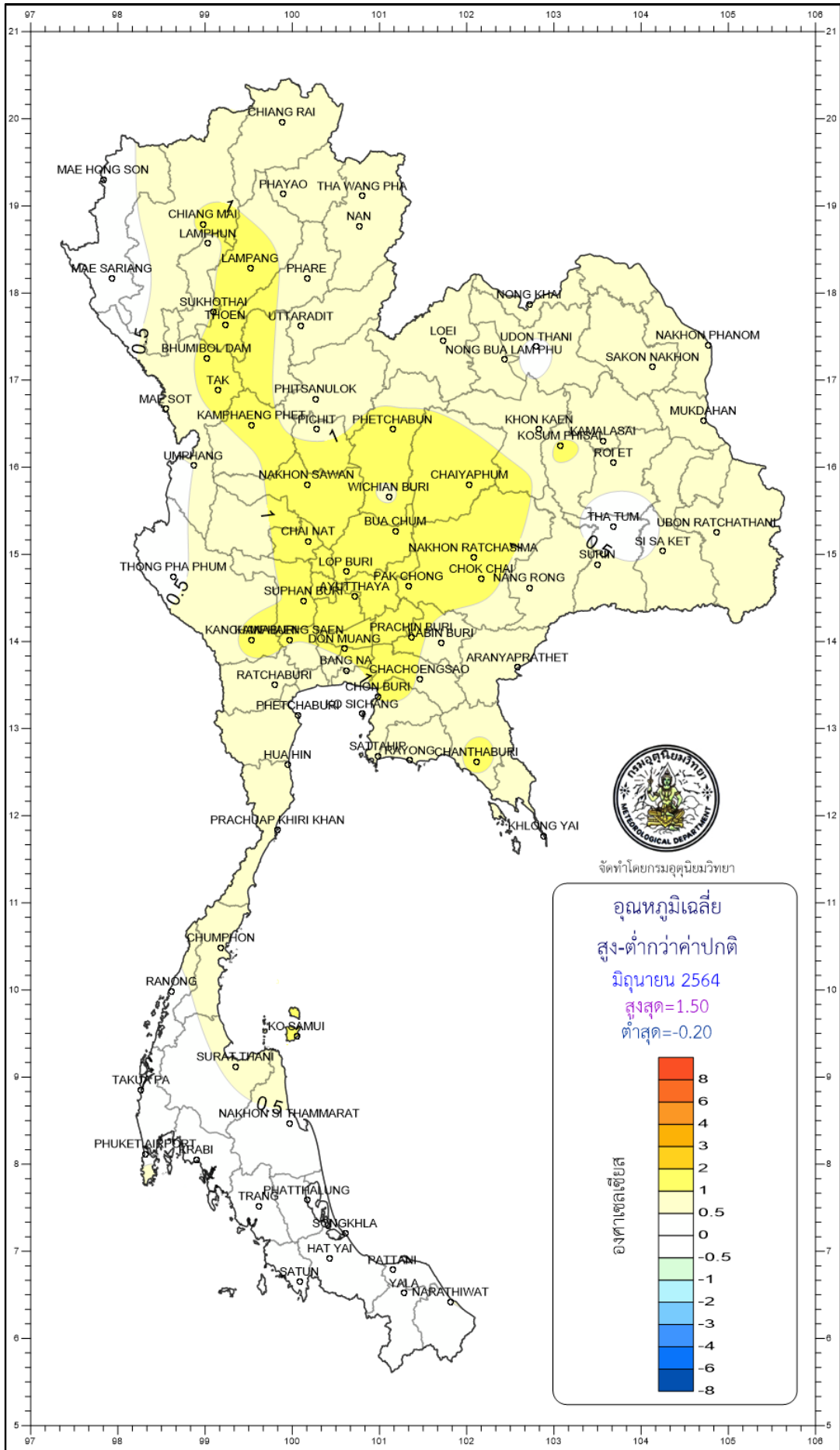








จัดทำโดยกรมอุตุนิยมวิทยา

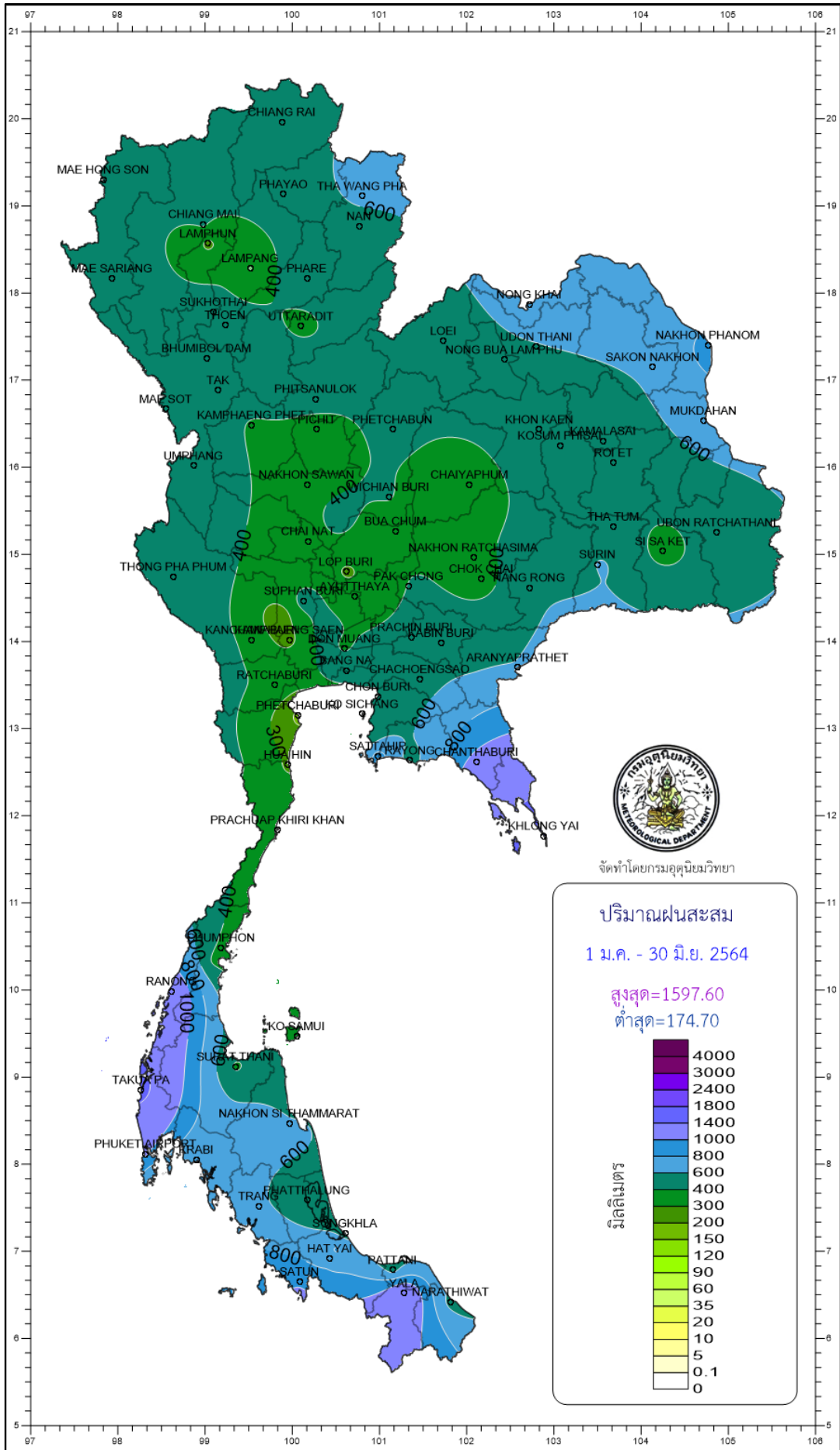


จัดทำโดยกรมอุตุนิยมวิทยา

อุณหภูมิเฉลี่ย  
สูง-ต่ำกว่าค่าปกติ  
มิถุนายน 2564  
สูงสุด=1.50  
ต่ำสุด=-0.20

องศาเซลเซียส

8
6
4
3
2
1
0.5
0
-0.5
-1
-2
-3
-4
-6
-8



จัดทำโดยกรมอุตุนิยมวิทยา

